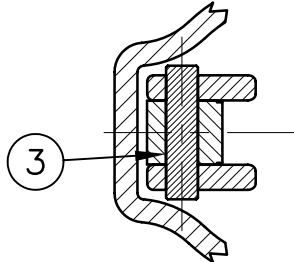


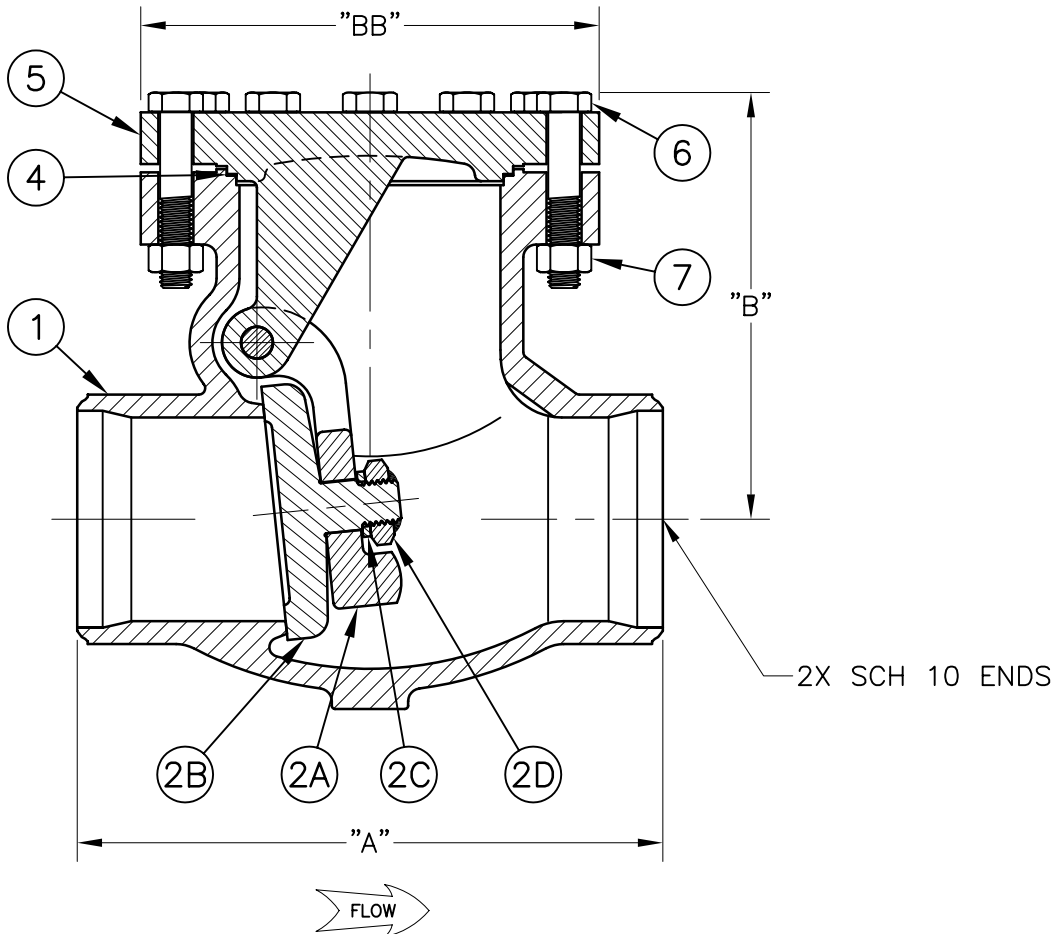
S-886MGF-xxW3A  
SSTL CRYOGENIC SWING CHECK VALVE  
METAL SEAT W/ SCH 10 ENDS

CWP: 720 PSIG NON-SHOCK COLD  
TEMPERATURE RATING +350°F TO -425°F



ITEM	DESCRIPTION	MATERIAL SPEC.	KIT #
* 1	BODY	ASTM A351 CF3M	
2A	ARM	ASTM A351 CF3M	1
2B	DISC	ASTM A351 CF3M	1
		ASTM A479 S31603	
2C	WASHER	ASTM A479 S31603	1
2D	NUT	ASTM F594 UNS 31600	1
3	PIN	ASTM A276 UNS 21800	1
4	GASKET	GTB GRAFOIL W/ Ni LINER	1,2
* 5	CAP	ASTM A351 CF3M	
6	BOLT	ASTM A320 UNS S30400	
7	NUT	ASTM A194 UNS 30400	
8	ROLL PIN	18-8 SSTL	

\*INDICATES PART IS PRESSURE CONTAINING



DIMENSIONS IN BRACKETS ARE IN MILLIMETERS

MODEL NUMBER	SIZE	"A"	"B"	"BB"	#1 SEAT ASM KIT	#2 GASKET KIT
S-886MGF-16W3A	2" [DN50]	8.00 [203.20]	4.52 [114.81]	5.81 [147.57]	S-886MGF-16-82	S-886MGF-16-83
S-886MGF-24W3A	3" [DN80]	9.50 [241.30]	5.99 [152.15]	8.00 [203.20]	S-886MGF-24-82	S-886MGF-24-83