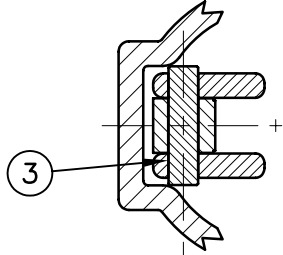


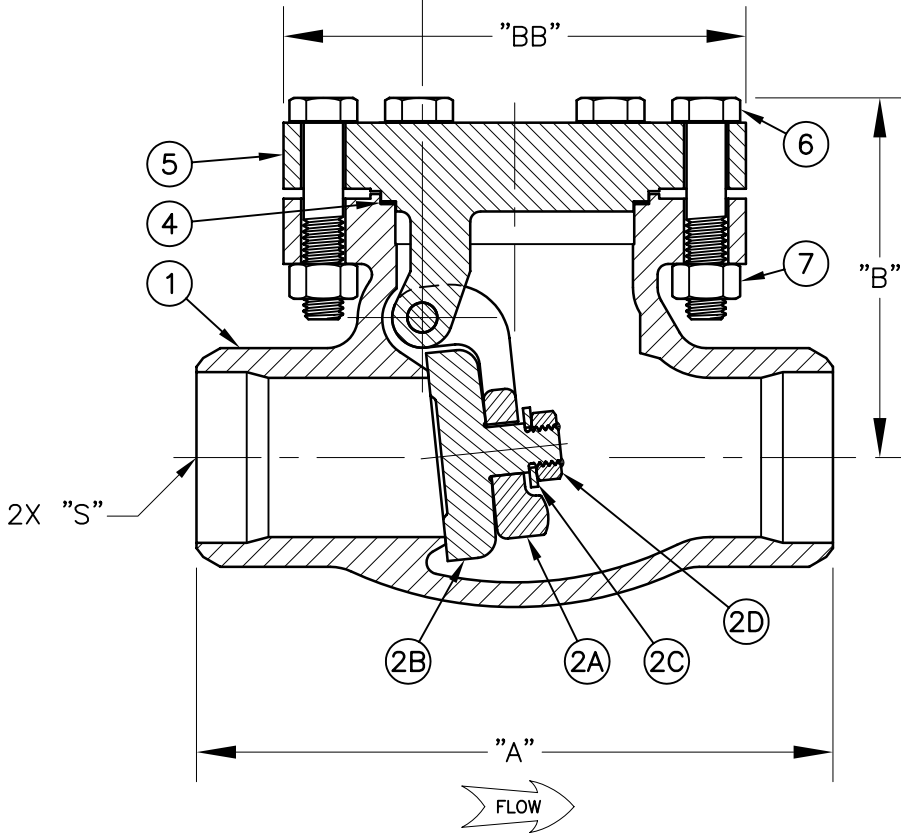
S-886M-xxW3x  
SSTL CRYOGENIC SWING CHECK VALVE  
METAL SEAT W/ SCH 10/40 ENDS

CWP: 720 PSIG NON-SHOCK COLD  
TEMPERATURE RATING +150°F TO -325°F

ITEM	DESCRIPTION	MATERIAL SPEC.	KIT #
* 1	BODY	ASTM A351 CF3M	
2A	ARM	ASTM A351 CF3M	1
2B	SEAT	ASTM A276 S31600 ASTM B161 C92200 ASTM A351 CF3M ASTM A479 S31603	1
2C	WASHER	ASTM A479 S31603	1
2D	NUT	ASTM F594 S31600	1
3	PIN	NITRONIC 60 S21800 18-8 SSTL	1
4	GASKET	TFE 25% GLASS FILL VIRGIN	1,2
* 5	CAP	ASTM A351 CF3M	
6	BOLT	ASTM A320 S30400	
7	NUT	ASTM A194 S30400	
8	ROLL PIN (NOT SHOWN)	18-8 SSTL	



\* INDICATES PART IS PRESSURE CONTAINING



DIMENSIONS IN BRACKETS ARE IN MILLIMETERS

MODEL NUMBER	SIZE	"A"	"B"	"BB"	"S"	#1 SEAT ASM KIT	#2 GASKET KIT
S-886M-16W3A	2" [DN50]	8.00" [203.2]	4.52" [114.8]	5.81" [147.6]	SCH 10 ENDS	S-886M-16-82	S-886M-16-83
S-886M-24W3A	3" [DN80]	9.50" [241.3]	5.99" [152.1]	8.00" [203.2]	SCH 10 ENDS	S-886M-24-82	S-886M-24-83
S-886M-24W3J	3" [DN80]	9.50" [241.3]	5.99" [152.1]	8.00" [203.2]	SCH 40 ENDS	S-886M-24-82	S-886M-24-83
S-886M-32W3J	4" [DN100]	14.00" [355.6]	8.63" [219.2]	9.00" [228.6]	SCH 40 ENDS	S-886M-32-82	S-886M-32-83

**REGO** CRYO-FLOW PRODUCTS