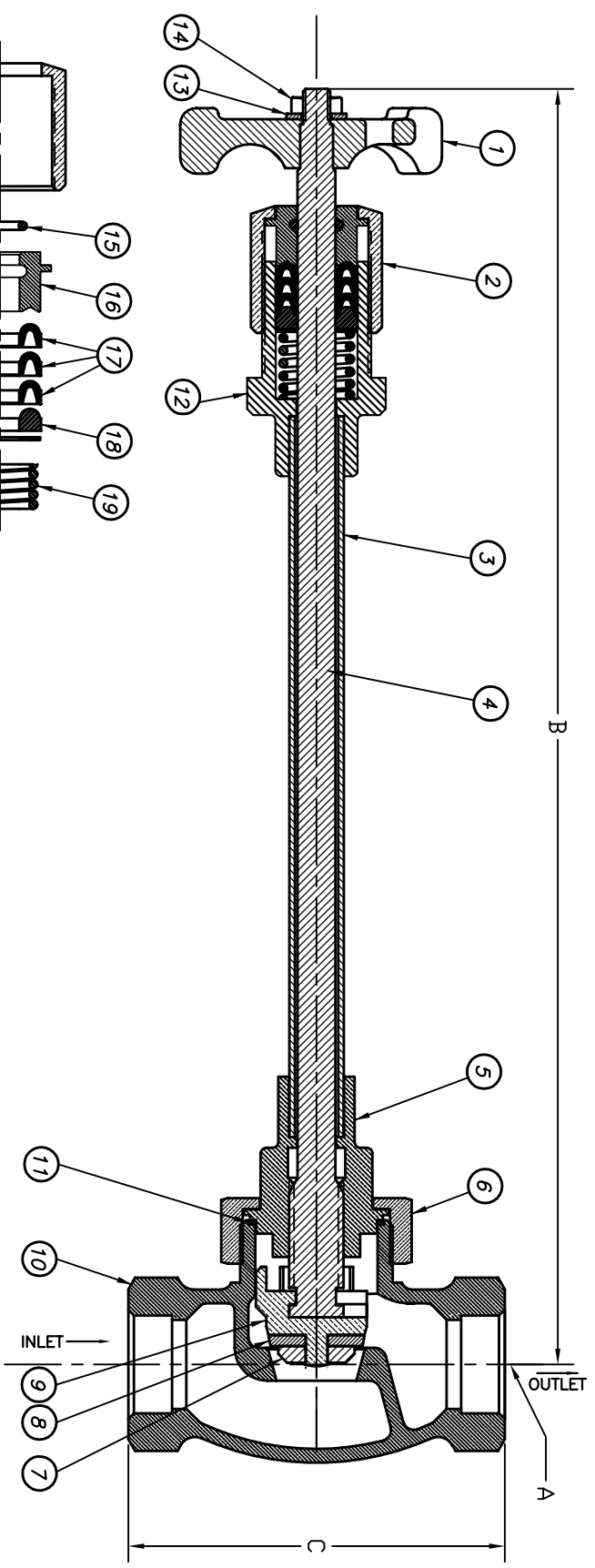


MATERIAL SPECIFICATION DRAWING



PART NO.	A (SIZE)	B	C
BK8404S/T	1/2 NPT	9"	3.7"
BK9404S/T	1/2 NPT	14"	3.7"
BK8406S/T	3/4 NPT	9"	3.7"
BK9406S/T	3/4 NPT	14"	3.7"
BK8408S/T	1 NPT	9"	4.3"
BK9408S/T	1 NPT	14"	4.3"
BK9410S/T	1 1/4 NPT	16"	5.2"
BK9412S/T	1 1/2 NPT	16"	5.2"
BK9416S/T	2 NPT	16"	6"

ITEM NO.	QTY.	DESCRIPTION	NUMBER
20	1	304 SSTL WASHER	UNS S30400
19	1	302 SSTL SPRING	UNS S30200
18	1	VIRGIN PTFE JAM RING	ASTM D1457
17	3	VIRGIN PTFE PRESSURE SEAL RINGS	ASTM D1457
16	1	FLUOROCARBON O-RING	UNS C36000
15	1	PLATED STEEL LOCKNUT	ASTM HK
14	1	PLATED STEEL WASHER	ASTM A563
13	1	BRASS UPPER BONNET	ASTM F844
12	1	VIRGIN PTFE O-RING	UNS C36000
11	2	BRONZE BODY	ASTM D1457
10	1	BRONZE SEAT HOLDER	UNS C92200
9	1	PTFE SEAT DISC	ASTM D1430
8	1	BRASS SEAT RETAINER	UNS C36000
7	1	BRASS BONNET NUT	UNS C36000
6	1	BRASS LOWER BONNET	UNS C36000
5	1	303 SSTL STEM	UNS S30300
4	1	304 SSTL TUBE	UNS S30400
3	1	BRASS SEAL HOUSING	UNS C36000
2	1	ALUMINIUM HANDWHEEL	UNS A03800
1	1		

REVISIONS

NO.	DATE	DESCRIPTION
1	1/19/01	ORIGINAL DATE

APPROVED

DESIGNED BY: _____

CHECKED BY: _____

DATE: 1/19/01

SCALE: NTS

REGO® CRYO-FLOW PRODUCTS
BURLINGTON, N.C. 27215

GLOBE VALVE

TYPICAL BK SERIES

THIS DRAWING IS THE PROPERTY OF REGO. ALL RIGHTS OF DESIGN OR INVENTION ARE RESERVED.

UNLESS OTHERWISE SPECIFIED: UNITS ARE IN INCHES AND DECIMALS THEREOF.

ANGLE DIMENSIONS ARE TO BE SHOWN UNLESS OTHERWISE SPECIFIED.

ALL DIMENSIONS ARE TO BE SHOWN UNLESS OTHERWISE SPECIFIED.

CONTOUR DIMENSIONS ARE TO BE SHOWN UNLESS OTHERWISE SPECIFIED.

SHAPE DIMENSIONS ARE TO BE SHOWN UNLESS OTHERWISE SPECIFIED.

INTERPRET DIMENSIONS & TOLERANCES IN ACCORDANCE WITH ASME Y14.5M-1994.

DRAWING NO. _____

DATE: _____

BY: _____

CHKD: _____

APP'D: _____

REV: _____

SCALE: NTS

TYPICAL BK SERIES

THIS DRAWING IS THE PROPERTY OF REGO. ALL RIGHTS OF DESIGN OR INVENTION ARE RESERVED.