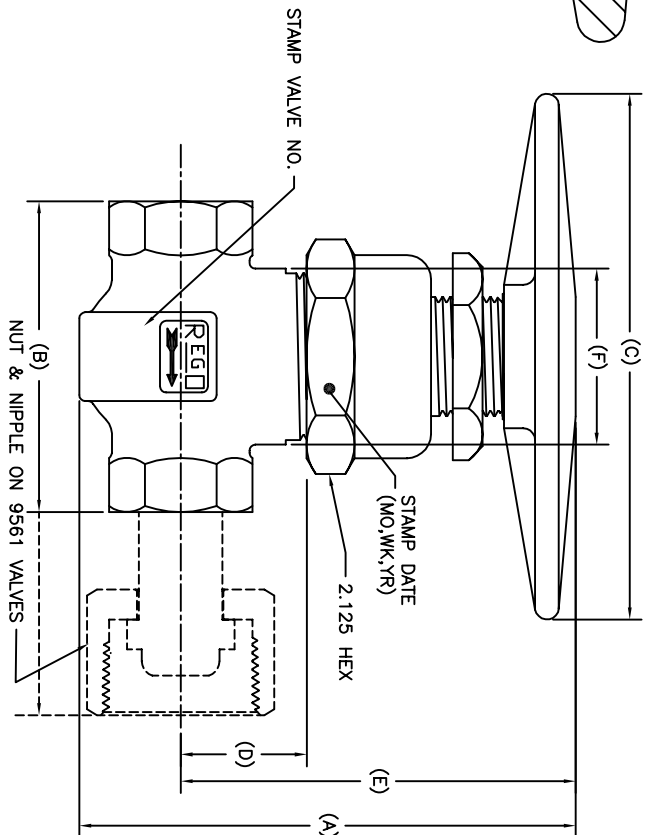
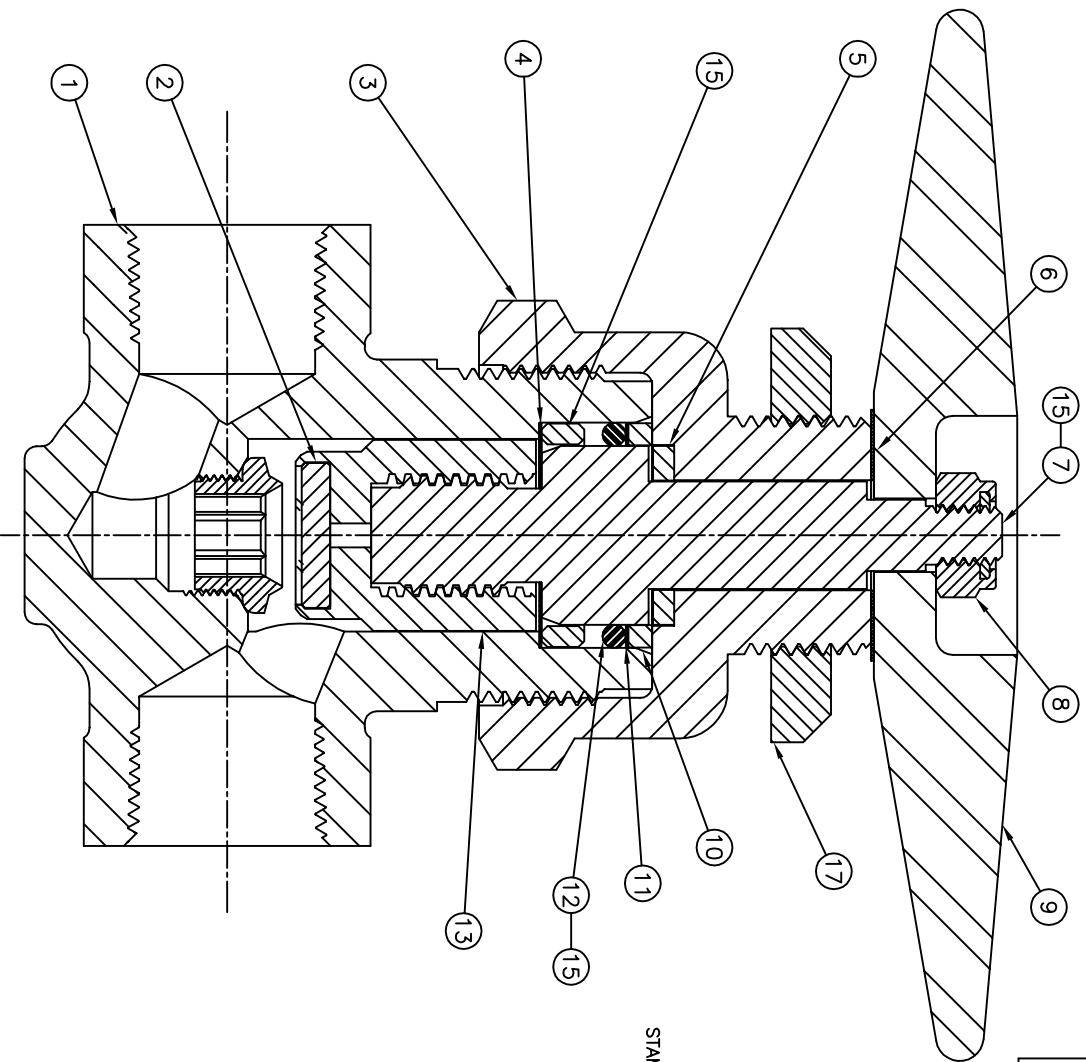


MATERIAL SPECIFICATION DRAWING



INLET & OUTLET OPTIONS

DIMENSIONS

PART NUMBER	INLET	OUTLET	A	B	C	D	E	F
9560CAP	1/2" NPT (FEMALE)	1/2" NPT (FEMALE)						
9560CBP	3/4" NPT (FEMALE)	3/4" NPT (FEMALE)						
9560CASEP	.843"/.847"	.843"/.847"	5.19"	3.25"				
9560CBSEP	1.053"/1.057"	1.053"/1.057"						
9560CBSE-BP	1.053"/1.057"	3/4" NPT (FEMALE)			5.50"	1.32"	4.26"	1.84"
9561CRP	1 11.5" NPSM R.H.	1 11.5" R.H. FEMALE SWIVEL						
9561CLP	1 11.5" NPSM L.H.	1 11.5" L.H. FEMALE SWIVEL	5.19"	5.27"				
9563CRP	1 11.5" NPSM R.H.	1 11.5" NPSM R.H.						
9563CLP	1 11.5" NPSM L.H.	1 11.5" NPSM L.H.	5.19"	3.79"				

①-CHANGES ①-DAGES

17	1	BRASS PANEL NUT PLATED	UNS C36000
16	1	BRASS LOWER RETAINING RING	UNS C36000
15		PARTS INDICATED ARE COATED WITH PTFE/PTFE LUBRICANT	ASTM D-2512, 20 DROPS @ 1100mm NO REACTION
14	1	COPPER SEAT DISC	UNS C11000
13	1	BRASS SEAT HOLDER	UNS C36000
12	1	FLUOROCARBON O-RING	ASTM HK
11	1	PTFE BACK-UP RING	ASTM D1457
10	1	BRASS RETAINING RING	UNS C36000
9	1	FORGED BRASS HANDWHEEL	UNS C37700
8	1	PLATED STEEL NUT	ASTM A563
7	1	BRASS STEM	UNS C36000
6	1	PTFE WASHER	ASTM D1457
5	1	PTFE WASHER	ASTM D4745
4	1	MONEL WASHER	UNS N04400
3	1	BRASS BONNET CAP	UNS 36000
2	1	MONEL SEAT INSERT	UNS N04400
1	1	FORGED BRASS BODY	UNS C37700

RECO® CRYO-FLOW PRODUCTS

BURLINGTON, N.C. 27215

RECO® CRYO-FLOW PRODUCTS

HP SHUTOFF VALVE

COPPER SEAT

PANEL MOUNT

9560CP SERIES

SCALE (2:1)

DATE

REVISIONS

OTHERWISE SPECIFIED:

UNLESS SPECIFIED:

2 PL. DEC. ± .015

3 PL. DEC. ± .005

4 PL. DEC. ± .003

5 PL. DEC. ± .002

6 PL. DEC. ± .001

7 PL. DEC. ± .0005

8 PL. DEC. ± .0002

9 PL. DEC. ± .0001

10 PL. DEC. ± .00005

11 PL. DEC. ± .00002

12 PL. DEC. ± .00001

13 PL. DEC. ± .000005

14 PL. DEC. ± .000002

15 PL. DEC. ± .000001

16 PL. DEC. ± .0000005

17 PL. DEC. ± .0000002

18 PL. DEC. ± .0000001

19 PL. DEC. ± .00000005

20 PL. DEC. ± .00000002

21 PL. DEC. ± .00000001

22 PL. DEC. ± .000000005

23 PL. DEC. ± .000000002

24 PL. DEC. ± .000000001

25 PL. DEC. ± .0000000005

26 PL. DEC. ± .0000000002

27 PL. DEC. ± .0000000001

28 PL. DEC. ± .00000000005

29 PL. DEC. ± .00000000002

30 PL. DEC. ± .00000000001

31 PL. DEC. ± .000000000005

32 PL. DEC. ± .000000000002

33 PL. DEC. ± .000000000001

34 PL. DEC. ± .0000000000005

35 PL. DEC. ± .0000000000002

36 PL. DEC. ± .0000000000001

37 PL. DEC. ± .00000000000005

38 PL. DEC. ± .00000000000002

39 PL. DEC. ± .00000000000001

40 PL. DEC. ± .000000000000005

41 PL. DEC. ± .000000000000002

42 PL. DEC. ± .000000000000001

43 PL. DEC. ± .0000000000000005

44 PL. DEC. ± .0000000000000002

45 PL. DEC. ± .0000000000000001

46 PL. DEC. ± .00000000000000005

47 PL. DEC. ± .00000000000000002

48 PL. DEC. ± .00000000000000001

49 PL. DEC. ± .000000000000000005

50 PL. DEC. ± .000000000000000002

51 PL. DEC. ± .000000000000000001

52 PL. DEC. ± .0000000000000000005

53 PL. DEC. ± .0000000000000000002

54 PL. DEC. ± .0000000000000000001

55 PL. DEC. ± .00000000000000000005

56 PL. DEC. ± .00000000000000000002

57 PL. DEC. ± .00000000000000000001

58 PL. DEC. ± .000000000000000000005

59 PL. DEC. ± .000000000000000000002

60 PL. DEC. ± .000000000000000000001

61 PL. DEC. ± .0000000000000000000005

62 PL. DEC. ± .0000000000000000000002

63 PL. DEC. ± .0000000000000000000001

64 PL. DEC. ± .00000000000000000000005

65 PL. DEC. ± .00000000000000000000002

66 PL. DEC. ± .00000000000000000000001

67 PL. DEC. ± .000000000000000000000005

68 PL. DEC. ± .000000000000000000000002

69 PL. DEC. ± .000000000000000000000001

70 PL. DEC. ± .0000000000000000000000005

71 PL. DEC. ± .0000000000000000000000002

72 PL. DEC. ± .0000000000000000000000001

73 PL. DEC. ± .00000000000000000000000005

74 PL. DEC. ± .00000000000000000000000002

75 PL. DEC. ± .00000000000000000000000001

76 PL. DEC. ± .000000000000000000000000005

77 PL. DEC. ± .000000000000000000000000002

78 PL. DEC. ± .000000000000000000000000001

79 PL. DEC. ± .0000000000000000000000000005

80 PL. DEC. ± .0000000000000000000000000002

81 PL. DEC. ± .0000000000000000000000000001

82 PL. DEC. ± .00000000000000000000000000005

83 PL. DEC. ± .00000000000000000000000000002

84 PL. DEC. ± .00000000000000000000000000001

85 PL. DEC. ± .000000000000000000000000000005

86 PL. DEC. ± .000000000000000000000000000002

87 PL. DEC. ± .000000000000000000000000000001

88 PL. DEC. ± .0000000000000000000000000000005

89 PL. DEC. ± .0000000000000000000000000000002

90 PL. DEC. ± .0000000000000000000000000000001

91 PL. DEC. ± .00000000000000000000000000000005

92 PL. DEC. ± .00000000000000000000000000000002

93 PL. DEC. ± .00000000000000000000000000000001

94 PL. DEC. ± .000000000000000000000000000000005

95 PL. DEC. ± .000000000000000000000000000000002

96 PL. DEC. ± .000000000000000000000000000000001

97 PL. DEC. ± .0000000000000000000000000000000005

98 PL. DEC. ± .0000000000000000000000000000000002

99 PL. DEC. ± .0000000000000000000000000000000001

100 PL. DEC. ± .00000000000000000000000000000000005