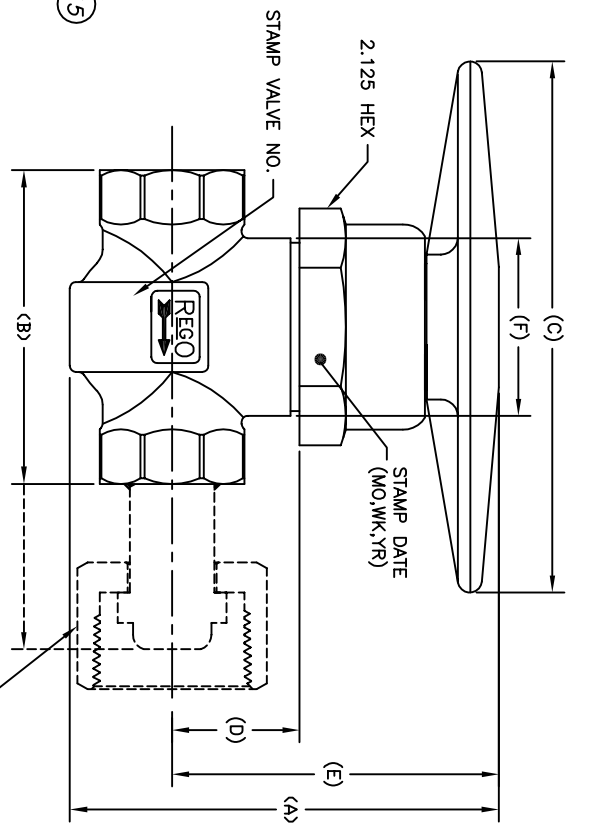
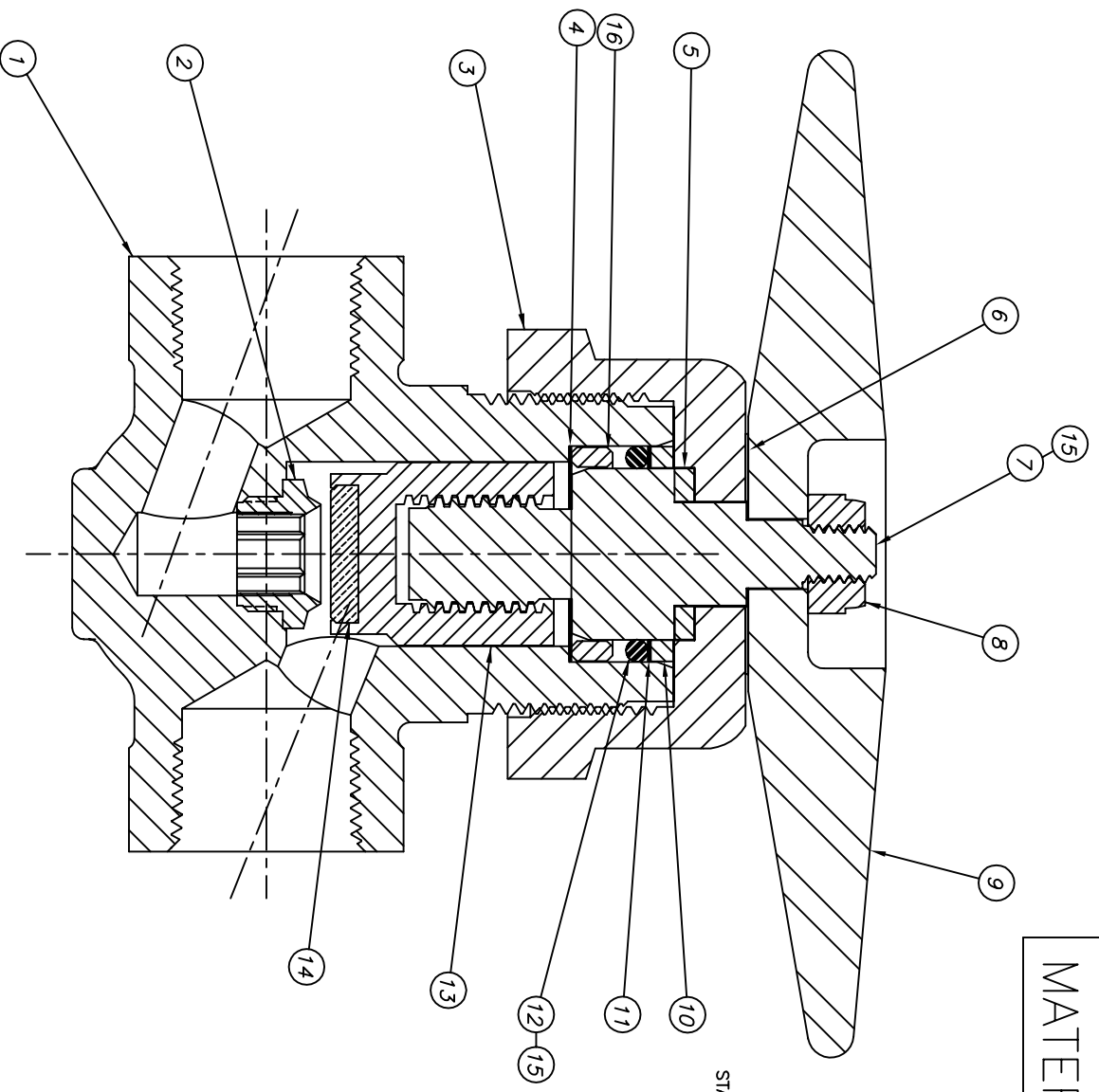


MATERIAL SPECIFICATION DRAWING



STAMPING VIEW

NUT & NIPPLE ON 9561 VALVES

PART NUMBER	INLET / OUTLET OPTIONS		DIMENSIONS					
	INLET	OUTLET	A	B	C	D	E	F
9560CA	1/2" NPT (FEMALE)	1/2" NPT (FEMALE)						
9560CB	3/4" NPT (FEMALE)	3/4" NPT (FEMALE)						
9560CSE	.843 / .847	.843 / .847	4.36"	3.25"				
9560CSE-B	1.053 / 1.057	1.053 / 1.057			5.50"			
9561CR	1 11.5" NPSM R.H.	1 11.5" R.H. FEMALE SWIVEL	4.36"	5.27"		1.32"	3.38"	1.84"
9561CL	1 11.5" NPSM L.H.	1 11.5" L.H. FEMALE SWIVEL						
9563CR	1 11.5" NPSM R.H.	1 11.5" NPSM R.H.	4.36"	3.79"				
9563CL	1 11.5" NPSM L.H.	1 11.5" NPSM L.H.						

ITEM NO.	QTY	DESCRIPTION	NUMBER
16	1	BRASS LOWER RETAINING RING	UNS C36000
15		PARTS INDICATED ARE COATED WITH PTFE/PTFE LUBRICANT	ASTM D-2512, 20 DPOPS @ 1100mm NO REACTION
14	1	COPPER SEAT DISC	UNS C11000
13	1	BRASS SEAT HOLDER	UNS C36000
12	1	FLUOROCARBON O-RING	ASTM HK
11	1	PTFE BACK-UP RING	ASTM D1457
10	1	BRASS RETAINING RING	UNS C36000
9	1	FORGED BRASS HANDWHEEL	UNS C37700
8	1	PLATED STEEL NUT	ASTM A563
7	1	PTFE WASHER	UNS C36000
6	1	PTFE WASHER	ASTM D1457
5	1	MONEL WASHER	ASTM D4745
4	1	MONEL WASHER	UNS N04400
3	1	BRASS BONNET CAP	UNS C36000
2	1	MONEL SEAT INSERT	UNS N04400
1	1	FORGED BRASS BODY	UNS C37700

REGO CRYO-FLOW PRODUCTS
 BURLINGTON, N.C. 27215

UNLESS SPECIFIED: ALL RIGHTS OF DESIGN OR INVENTION ARE RESERVED.

3 Pk. DEC. 3 102
 1 Pk. DEC. 3 102
 ANGLES 3 102
 CONFORMANCE 010 PM
 REMOVE BURRS, BREAK
 SHARP EDGES, ROUTS MAX.
 INTERFERE DIMENSIONS &
 ASIDE 1143B-1894

SCALE (2:1)

DRAWING NO. 9560C SERIES

DWG SIZE C