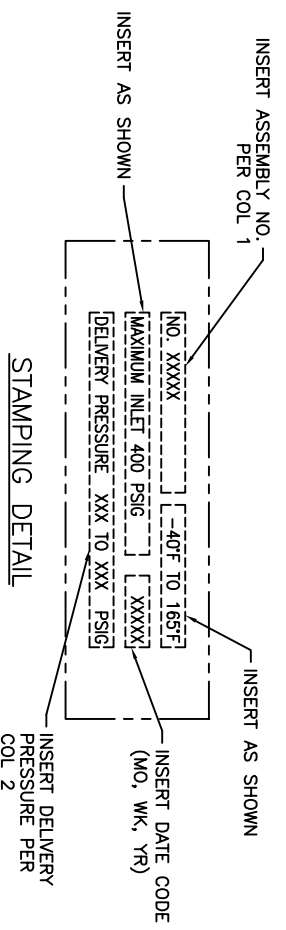


- NOTES:
1. DIMENSIONS ARE APPROXIMATE. INCH-[MM]
 2. CLEAN ITEMS 9-11 & 13-17 PER CGA G-4.1.
 3. CLEAN ITEM 12 PER THAT DRAWING.
 4. ASSEMBLE IN CLEAN AREA.
 5. SCREWS SHOULD BE TIGHTENED IN A CRESSOROSS PATTERN FOR EVEN LOADING.
 6. APPLY SPARINGLY, KRYTOX COMPOUND TO POINT AND FIRST FEW THREADS OF ADJUSTING SCREW, AND TO ALL O-RINGS AND TO BACK CAP'S BORE (SIDE AND BOTTOM).
 7. TEST PER BR-1780-100.
 8. INSTALL PLASTIC PLUGS AND PUT REGULATOR & CGA-4.1 CLEAN LABEL IN BAG AND SEAL.

COL 1	COL 2
ASSEMBLY NO.	DELIVERY PRESSURE
178BAE	5-55 PSIG [0.3-3.8 BAR]
178BBE	40-110 PSIG [2.8-7.6 BAR]
178BCE	100-200 PSIG [6.9-13.8 BAR]

NOTE: ROLL STAMP BONNET TO READ WITH ADJUSTING SCREW POINTING DOWN. (ALL CHARACTERS .125 HIGH)



ITEM	QTY.	DESCRIPTION	MATERIAL
18	1	BONNET CAP	BRASS
17	1	SPRING	STAINLESS STEEL
16	1	O-RING	EPDM
15	1	BACK CAP	BRASS
14	1	SEAL	PTFE (TEFLON)
13	1	BODY	BRASS
12	1	SEAT DISC ASSEMBLY	BRASS/EPDM
11	1	BUTTON	BRASS
10	1	DIAPHRAGM LINER	PTFE (TEFLON)
9	1	DIAPHRAGM	BUNA-N (NITRILE)
8	1	DIAPHRAGM PLATE	BRASS
7	1	SPRING	STAINLESS STEEL
6	1	SPRING BUTTON	BRASS
5	1	BONNET	ALUM/NI PLATE
4	1	LOCK NUT	STAINLESS STEEL
3	1	ADJUSTING SCREW	BRASS/SSTL
2	2	PIPE PLUG	BRASS
1	8	SCREW	STAINLESS STEEL

DATE	BY	DESCRIPTION
2-05-02	J. OLSEN	DESIGN
02-15-02	D. WILLIAMS	APPROVED

REVISIONS	DATE	DESCRIPTION
A	2-05-02	ISSUED

CHECKED: D. WILLIAMS ORIGINAL DATE: 2-05-02 PLOT GENERATED: 02-15-02	ENGINEER: D. WILLIAMS APPROVED: J. OLSEN	UNLESS SPECIFIED: 2 PL. DEC. ± .015 3 PL. DEC. ± .005 4 PL. DEC. ± .003 CONCENTRICITY .010 PM ROUNDNESS .005 MM SQUARE EDGES R0.15 MAX INTERFERE DIMENSIONS & ASSEY 114.5M, 1994	THIS DRAWING IS ECR PROPRIETARY INFORMATION ALL RIGHTS OF DESIGN OR INVENTION ARE RESERVED RECO CRYO-FLOW PRODUCTS BURLINGTON, N.C. 27215
--	---	---	--

DRAWING NO. 1788XE (MATL) SCALE (1:1)	TITLE: REGULATOR, FINAL LINE BALANCED SEAT (1 NPT)	OWNERS
--	--	--------